

BELLING BUCKET

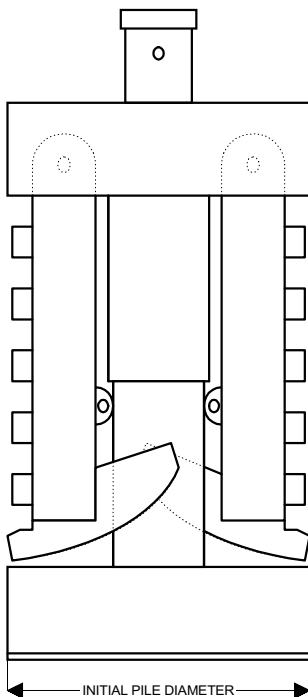


The robust construction of the N.U.B. Belling Bucket allows trouble free operation during the arduous digging of the pile bell.

Various bell diameters are achievable by adjustable pin locations.

Crumb tray can be integral with central column or, using roller and thrust bearing assembly, can be stationary while main body rotates. Crumb tray is fitted with bottom hinged opening to facilitate spoil discharge.

Belling bucket comes complete with kelly box to suit customer's requirements.

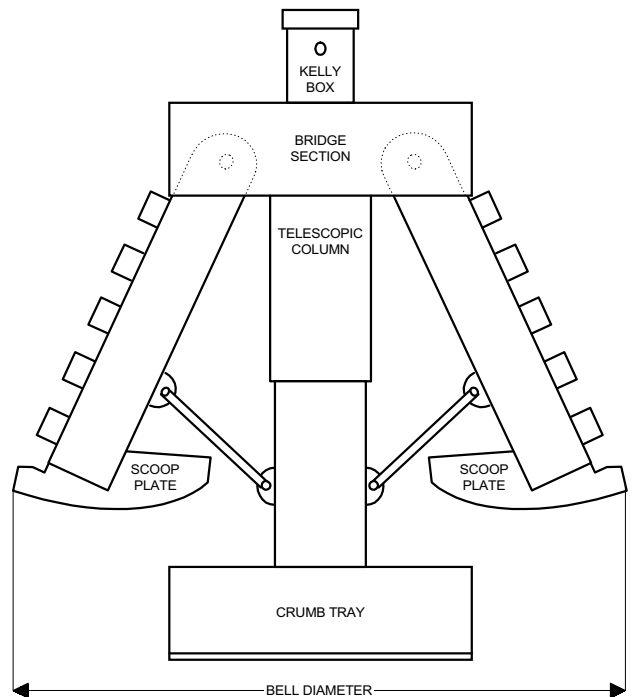


BELLING BUCKET

Left: Closed Position

Right: Open Position

Design subject to change without notice.
Tools also manufactured to customers specification.



N.U.B. Engineering Limited

Mosshall Road, Newhouse Industrial Estate, Motherwell, ML1 5RX, Scotland.

Telephone: +44 (0) 1 698 833873

Facsimile: +44 (0) 1 698 734322